

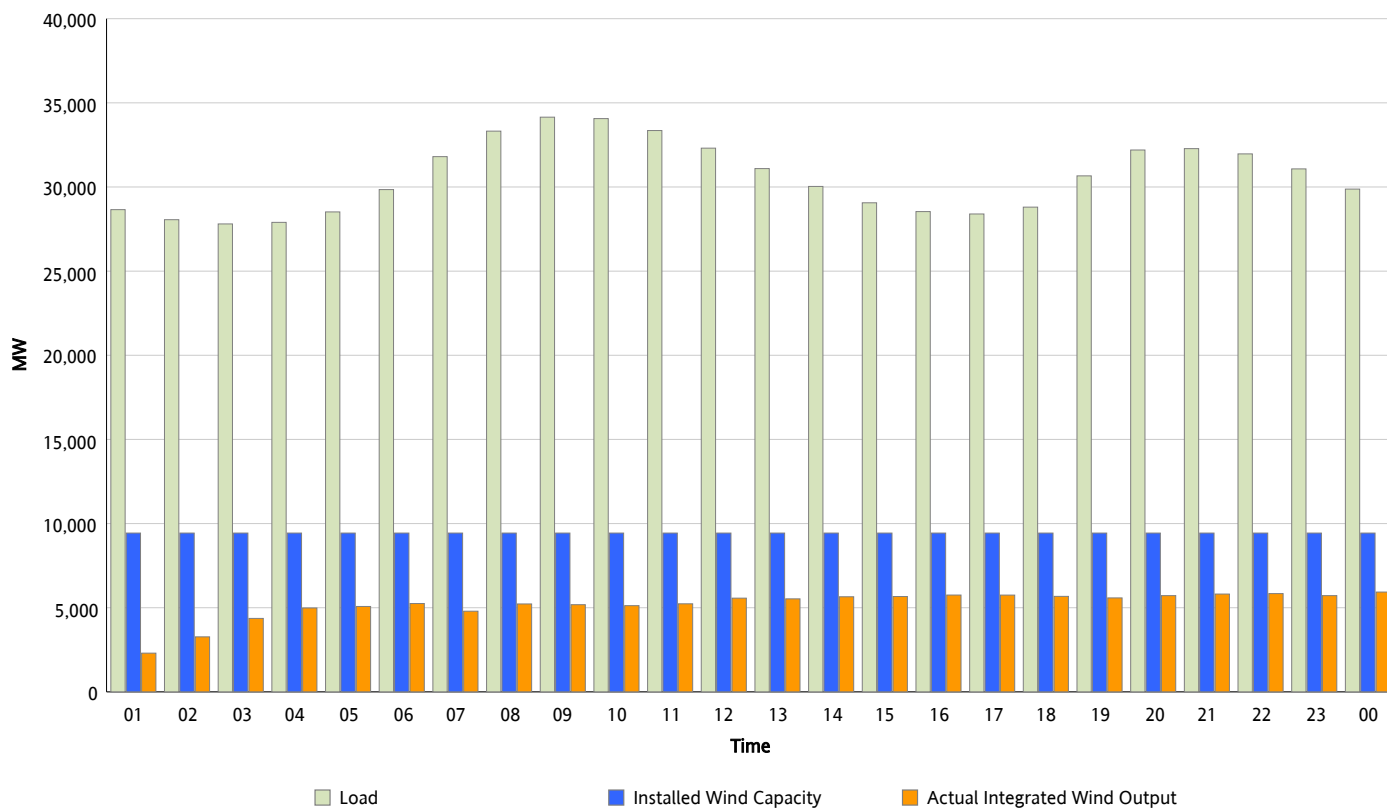


ERCOT Grid Operations

Wind Integration Report : 02/25/2012

Peak Load	34,150 MW
Load Peak Hour (HE)	09
Wind Over Peak	5,182 MW
Wind Record 10/07/11	7,400 MW
Max Wind Value*	5,976 MW
Wind Peak Time	23:13
Wind Integration %	19.78 %

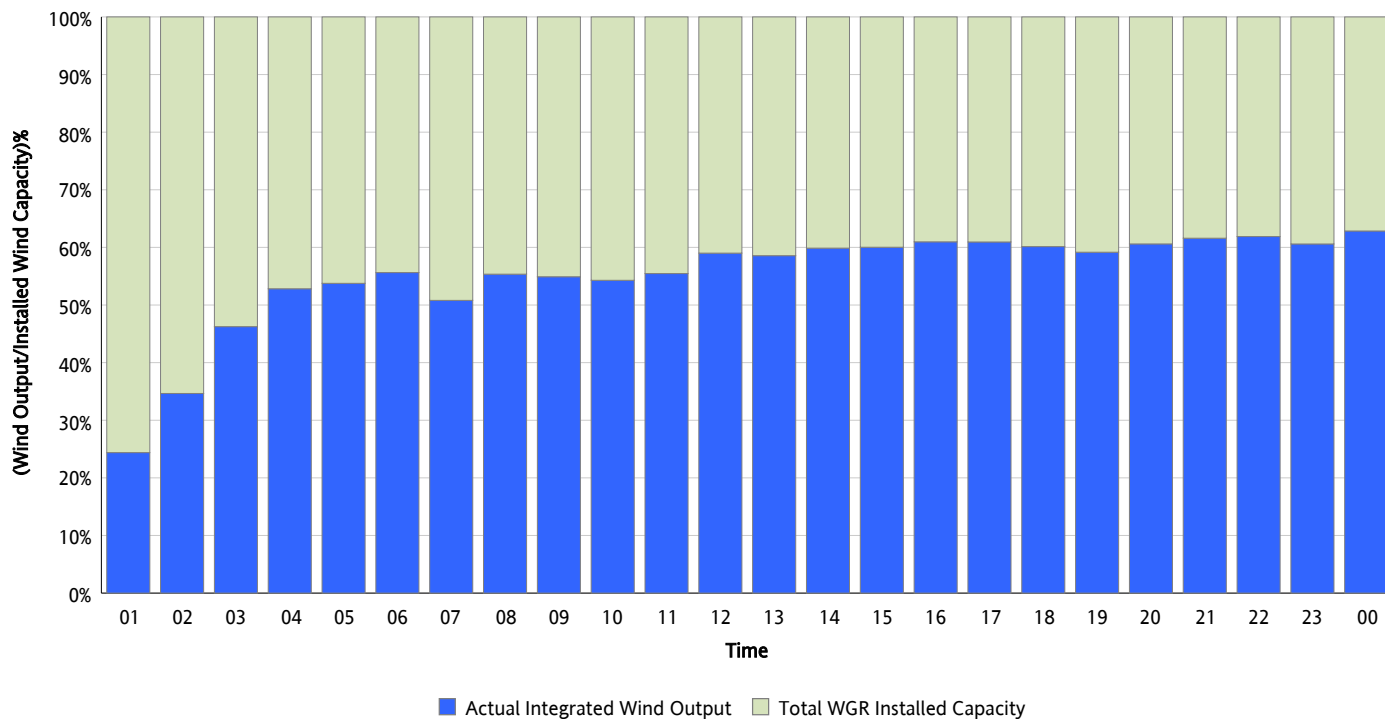
Hourly Average Actual Load vs. Actual Wind Output
02/25/2012



* Wind Max represents the instantaneous value and the rest of the values are integrated over the hour

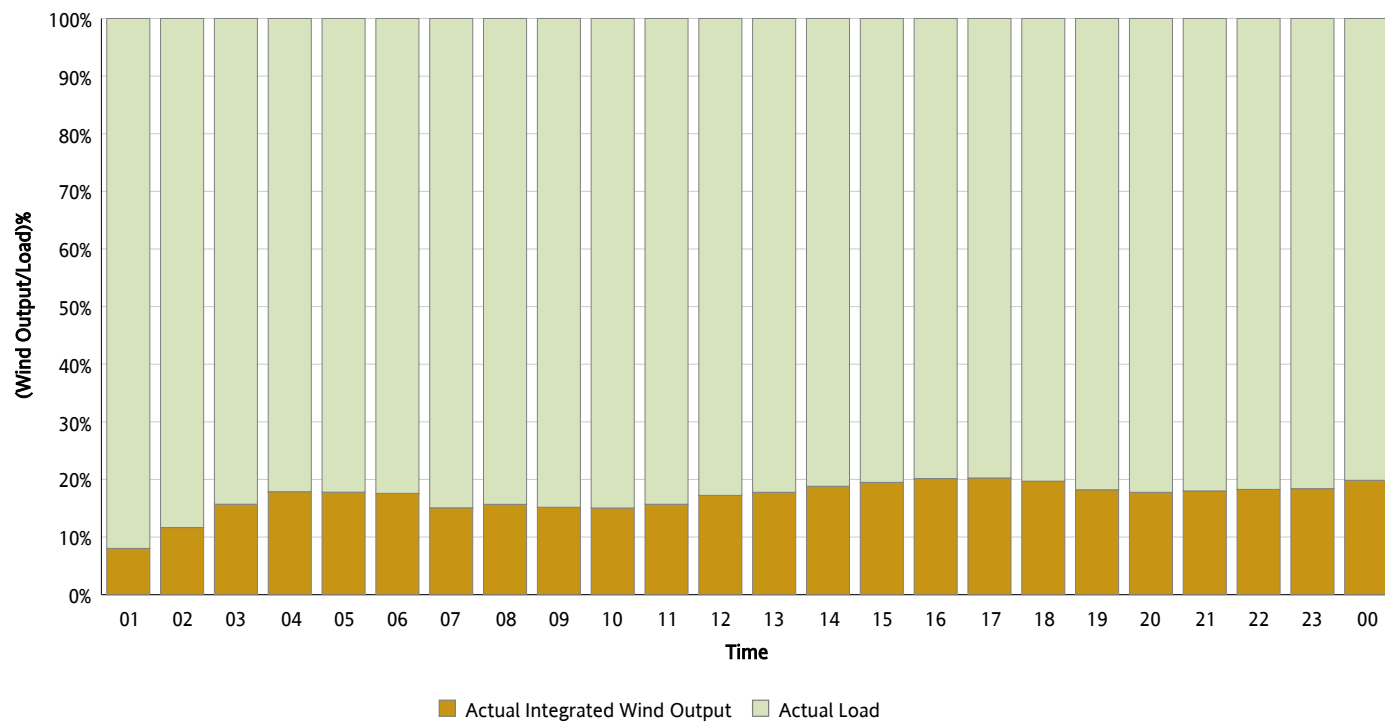
Actual Wind Output as a Percentage of the Total Installed Wind Capacity

02/25/2012



Actual Wind Output as a Percentage of the ERCOT Load

02/25/2012



ERCOT Load vs. Actual Wind Output

02/18/2012 - 02/25/2012

